

Integrating Social Equity into Regional Planning: Lessons from SB 375

Jonathan London, Ph.D.



Fresno County Council of Governments

Peer Learning Exchange

AUGUST 20, 2014

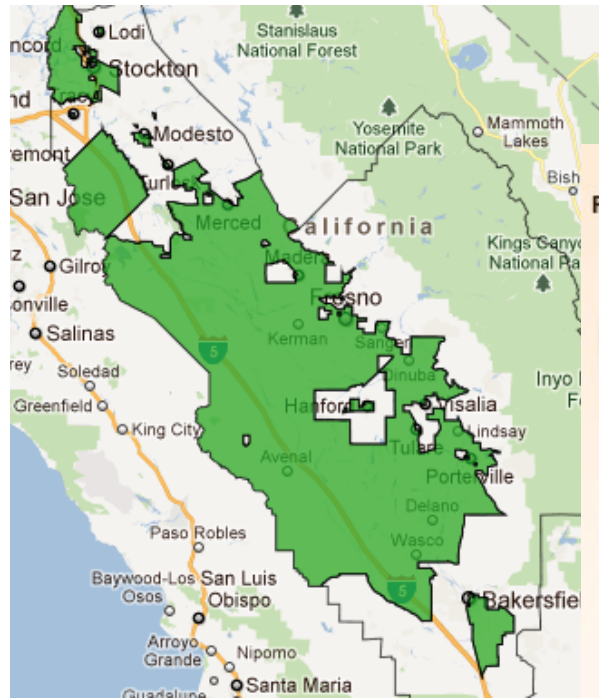
Core Challenge: How to enhance integration of social equity into urban/regional planning?

- ✓ Relationships Matter (between agencies, communities and academics)
- ✓ Context Matters (Political, economic, social)
- ✓ Tools Matter (mapping/ measuring social equity)
- ✓ Technical Capacity Matters (agencies, communities)
- ✓ Timing Matters (Point of engagement with policy/ planning process)

Case Studies

- Environmental Justice mapping in California's San Joaquin Valley
 - (Cumulative Environmental Vulnerability Assessment – CEVA)
- Urban/ regional planning in the San Joaquin Valley
 - Policy context: Senate Bill (SB) 375
- Urban/ regional planning in the Sacramento region
 - Policy context: Senate Bill (SB) 375

CEVA in the San Joaquin Valley



SJVAPCD "EJ Map"

CalEnviroScreen 2.0 (Draft) Highest Scoring Areas

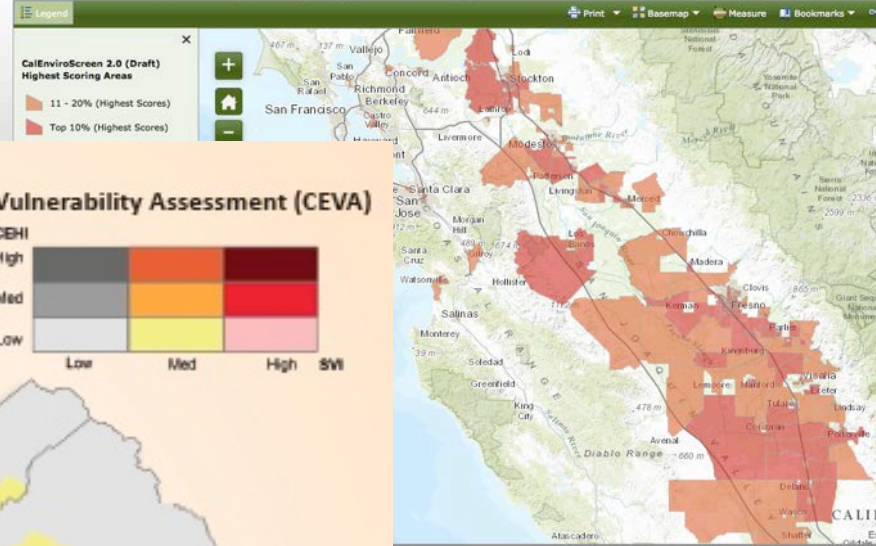
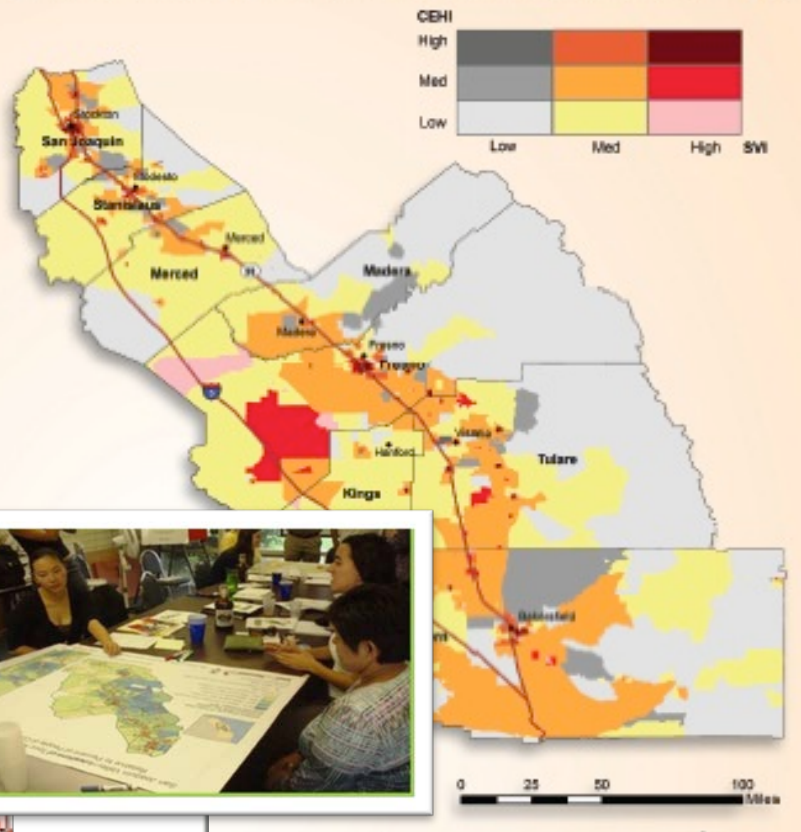


Figure 2: Cumulative Environmental Vulnerability Assessment (CEVA)



UC Davis CRC "EJ Map"

CAL EPA "EJ Map"

PI: J. London
 CRC Team: T. Zagofsky, G. Huang, T. Greenfield
 Partners: SJV CHIP

Grand push towards environmental justice mapping

As a network of organizations promoting environmental justice in the San Joaquin Valley, we are extremely excited to have a tool that captures disproportionate environmental burdens and health outcomes in the state. Previously, CCEJN worked with the San Joaquin Valley Cumulative Health Impact Project (SJV CHIP) to address and identify cumulative health impacts in the region. CCEJN also participated in ground-truthing the UC Davis Center for Regional Change mapping tool several years ago. The tool mapped areas in the San Joaquin Valley as Cumulative Environmental Vulnerability Action Zones (CEVAz). CCEJN would like to thank OEHHA for taking the initiative at the state level to conduct this grand push towards data gathering and environmental justice mapping.

- Central California Environmental Justice Network
Letter to CalEPA/ OEHHA re: CalEnviroScreen 2.0

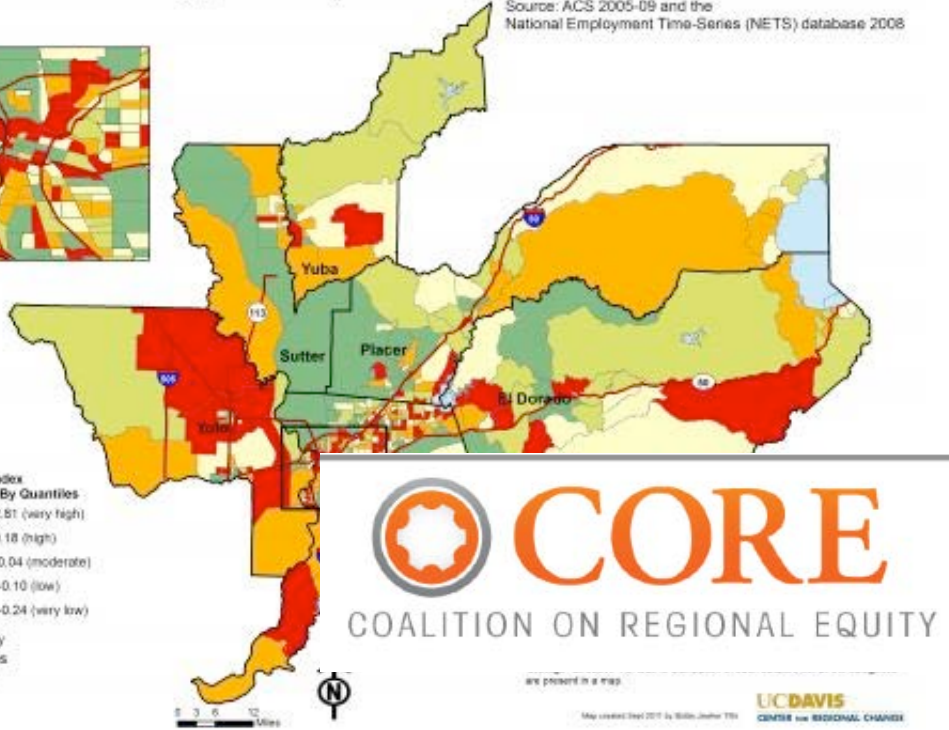
Integration: CEVA

	Relationships (Community)	Relationships (Agency)	Regional Context	Tools	Capacity (Community)	Capacity (Agency)	Timing	Impact Local	Impact Regional	Impact State
CEVA SJV	Green	Yellow	Red	Green	Yellow	Yellow	Green	Yellow	Red	Green
SB 375 Sac	Green	Green	Yellow	Green	Yellow	Green	Green	Green	Green	Yellow
SB 375 SJV	Green	Yellow	Red	Green	Yellow	Yellow	Yellow	Yellow	Green	Yellow

SB 375 Sacramento

Opportunity Index by Census Tract

Source: ACS 2005-09 and the National Employment Time-Series (NETS) database 2008



Opportunity Index
Classification By Quintiles

- 0.19 - 2.81 (very high)
- 0.05 - 0.18 (high)
- 0.09 - 0.04 (moderate)
- 0.23 - -0.10 (low)
- 2.01 - -0.24 (very low)

Highway
Counties
Lakes

 **CORE**
COALITION ON REGIONAL EQUITY

are present in a map

Map created April 2011 by William Johnston TSM
UC DAVIS
CENTER FOR REGIONAL CHANGE



PI: C. Benner.

Team: J London, B. Tithi, T. Greenfield

Partners: SACOG, CORE

Classic Partnership...

The whole use of the vulnerability index, that helped us amplify our analysis of what we might consider environmental justice areas. – Planner, Sacramento Region

... the fact that you folks had already done a lot of your own statistical analysis and had some ideas of where some communities of interest were, that was a really classic partnership, teamwork, people building off each other; I think that was really helpful in terms of helping to coalesce the broader group of stakeholders...

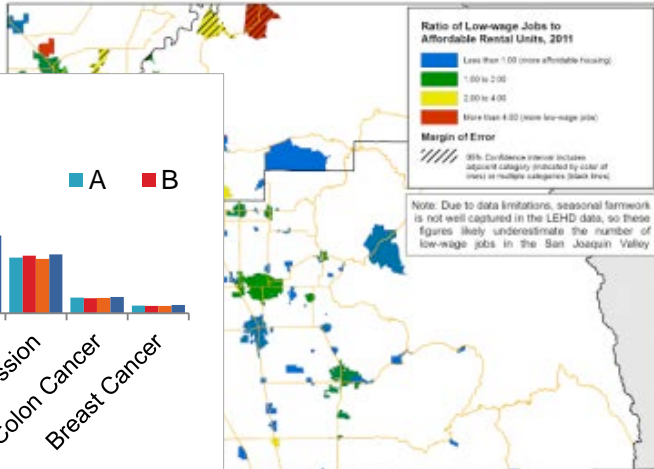
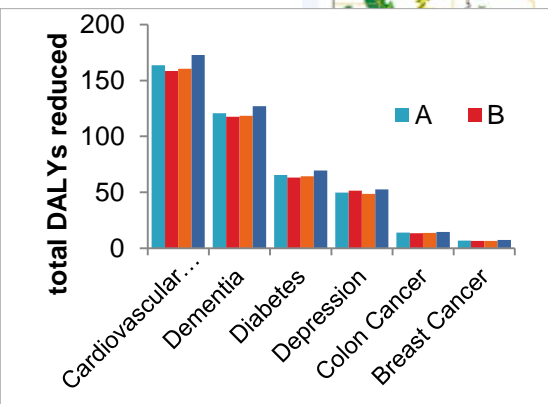
– Planner, Sacramento Region

Uptake Analysis: Sacramento

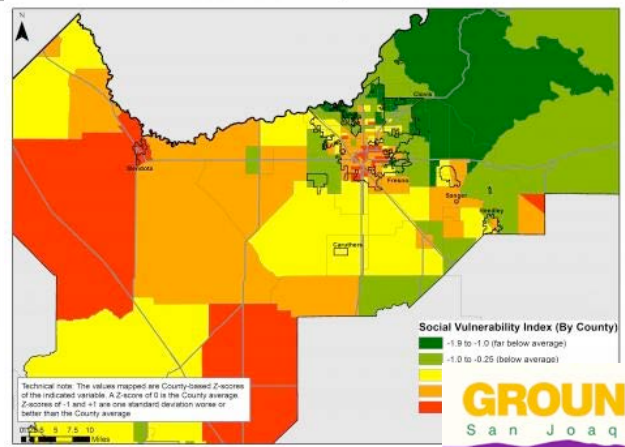
	Relationships (Community)	Relationships (Agency)	Regional Context	Tools	Capacity (Community)	Capacity (Agency)	Timing	Impact Local	Impact Regional	Impact State
CEVA SJV	Green	Yellow	Red	Green	Yellow	Yellow	Green	Yellow	Red	Green
SB 375 Sac	Green	Green	Yellow	Green	Yellow	Green	Green	Green	Green	Yellow
SB 375 SJV	Green	Yellow	Red	Green	Yellow	Yellow	Yellow	Yellow	Green	Yellow

SB 375 San Joaquin Valley

Southern San Joaquin Valley Jobs-Housing Fit, 2011



Social Vulnerability Index 2010



Co-PIs: C. Benner and J London
 Team: A. Karner, C. Garoupa-White
 Partners: Climate Plan SJV Coalition, Housing CA

This is a poor county...

This is a poor county, the majority of our members come from very poor communities, with huge unemployment rates. They want to know if there will be jobs. They want to know if they're going to get water, which is tied to jobs. So if I went in there and gave them a pitch on social equity, even though the majority of people might be people of color, they'd say what about the jobs?

– Planner, San Joaquin Valley

Uptake Analysis: San Joaquin Valley

	Relation- ships (Commun- ity)	Relation- ships (Agency)	Regional Context	Tools	Capacity (Commun- ity)	Capacity (Agency)	Timing	<i>Impact Local</i>	<i>Impact Regional</i>	<i>Impact State</i>
CEVA SJV	Green	Yellow	Red	Green	Yellow	Yellow	Green	Yellow	Red	Green
SB 375 Sac	Green	Green	Yellow	Green	Yellow	Green	Green	Green	Green	Yellow
SB 375 SJV	Green	Yellow	Red	Green	Yellow	Yellow	Yellow	Yellow	Green	Yellow

Conclusion

- Align planning environment (relationships, regional context, tools, capacity, timing) to
 - Inform planning process (how, who, where, when)
 - Access appropriate technical assistance
 - Consider mix of “inside-out” and “outside-in” strategies

Thank you! / Questions?

UCDAVIS

CENTER FOR REGIONAL CHANGE

- 530-752-3007
- crcinfo@ucdavis.edu
- <http://regionalchange.ucdavis.edu/>

